

# \$599,900 - 1912 155 Avenue, Edmonton

MLS® #E4430196

**\$599,900**

5 Bedroom, 4.00 Bathroom, 1,772 sqft  
Single Family on 0.00 Acres

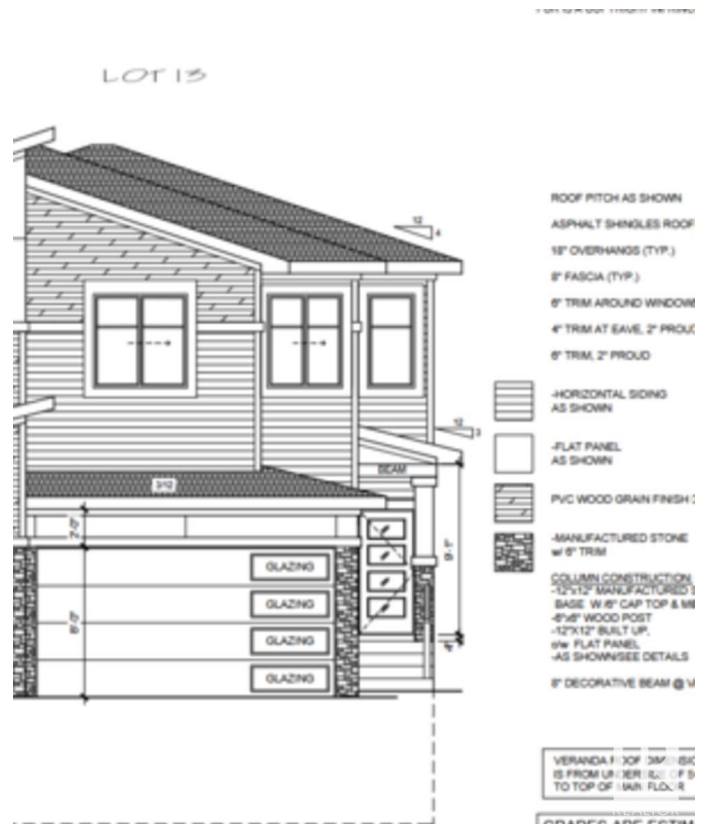
Gorman, Edmonton, AB

**\*\*MAIN FLOOR DEN\*\*2 BED LEGAL  
BASEMENT SUITE\*\*SPICE KITCHEN +  
MAIN KITCHEN + KITCHEN IN  
BASEMENT\*\*Welcome to this stunning half  
duplex in the heart of Gorman, North  
Edmonton! With a finished legal basement  
suite, this home offers endless possibilities for  
extra income or comfortable multi-generational  
living. The main floor boasts a bright and airy  
open-to-below concept, a spacious living  
room, a dining area, and a convenient side  
entry to the basement. You'll also find a  
versatile den with a 3-piece ensuite bathroom  
and a practical spice kitchen for all your  
culinary adventures. Upstairs, relax in the  
serene primary suite featuring a luxurious  
5-piece ensuite and walk-in closet.two  
additional bedrooms, a stylish 3-piece  
bathroom, and a laundry room complete this  
level. The legal basement suite comes with  
two bedrooms, its own kitchen, living space,  
laundry, and private entrance. **\*\*House under  
Construction\*\*approx ready within 3-4  
months\*\*****

Built in 2025

## Essential Information

MLS® # E4430196  
Price \$599,900



Bedrooms	5
Bathrooms	4.00
Full Baths	4
Square Footage	1,772
Acres	0.00
Year Built	2025
Type	Single Family
Sub-Type	Half Duplex
Style	2 Storey
Status	Active

### **Community Information**

Address	1912 155 Avenue
Area	Edmonton
Subdivision	Gorman
City	Edmonton
County	ALBERTA
Province	AB
Postal Code	T5Y 4H8

### **Amenities**

Amenities	Carbon Monoxide Detectors, Detectors Smoke
Parking	Double Garage Attached

### **Interior**

Interior Features	ensuite bathroom
Appliances	See Remarks
Heating	Forced Air-1, Natural Gas
Fireplace	Yes
Fireplaces	None
Stories	3
Has Suite	Yes
Has Basement	Yes
Basement	Full, Finished

### **Exterior**

Exterior	Wood, Stone, Vinyl
Exterior Features	Commercial, Golf Nearby, Public Transportation, Schools, Shopping Nearby, View City

Roof	Asphalt Shingles
Construction	Wood, Stone, Vinyl
Foundation	Concrete Perimeter

### **Additional Information**

Date Listed April 10th, 2025

Days on Market 13

Zoning Zone 03

DATA IS DEEMED RELIABLE BUT IS NOT GUARANTEED ACCURATE BY THE REALTORS® ASSOCIATION OF EDMONTON. COPYRIGHT 2025 BY THE REALTORS® ASSOCIATION OF EDMONTON. ALL RIGHTS RESERVED. Trademarks are owned or controlled by the Canadian Real Estate Association (CREA) and identify real estate professionals who are members of CREA (REALTOR®, REALTORS®) and/or the quality of services they provide (MLS®, Multiple Listing Service®)

Listing information last updated on April 23rd, 2025 at 7:47pm MDT