

\$399,999 - 10484 21 Avenue, Edmonton

MLS® #E4428970

\$399,999

3 Bedroom, 1.50 Bathroom, 1,107 sqft
Single Family on 0.00 Acres

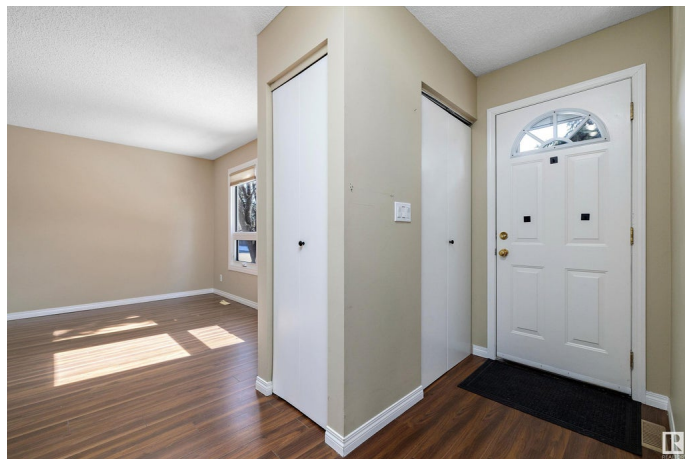
Keheewin, Edmonton, AB

Move-in ready! This lovely 2-story family home has tons of great upgrades and loads of room. The main floor is open and bright, including a spacious living room, powder room, dining room, and a full kitchen with new stainless steel appliances. Step out back onto the huge deck and enjoy the fully fenced yard. Upstairs are 3 large bedrooms with great storage and all-new carpet, along with the main 4-piece bath. The basement includes a huge den, perfect for a rec room, office, or theater space, as well as newer laundry machines and seemingly endless storage options. New vinyl siding, exterior cement and ALL the windows complete the home, making it maintenance-free and efficient! Perfectly located close to all of life's necessities, including schools for all ages, major shopping centers, transit, LRT, and easy commuting with access to HWY 2, the Anthony Henday, and beyond. Must be seen!

Built in 1983

Essential Information

MLS® #	E4428970
Price	\$399,999
Bedrooms	3
Bathrooms	1.50
Full Baths	1



Half Baths	1
Square Footage	1,107
Acres	0.00
Year Built	1983
Type	Single Family
Sub-Type	Detached Single Family
Style	2 Storey
Status	Active

Community Information

Address	10484 21 Avenue
Area	Edmonton
Subdivision	Keheewin
City	Edmonton
County	ALBERTA
Province	AB
Postal Code	T6J 5A3

Amenities

Amenities	On Street Parking, Deck, Hot Water Natural Gas, Parking-Extra, Vinyl Windows, See Remarks
Parking Spaces	3
Parking	Parking Pad Cement/Paved, RV Parking

Interior

Appliances	Dishwasher-Built-In, Dryer, Microwave Hood Fan, Refrigerator, Stove-Electric, Washer, Window Coverings
Heating	Forced Air-1, Natural Gas
Stories	3
Has Basement	Yes
Basement	Full, Partially Finished

Exterior

Exterior	Wood, Vinyl
Exterior Features	Airport Nearby, Back Lane, Fenced, Low Maintenance Landscape, Playground Nearby, Public Swimming Pool, Public Transportation, Schools, Shopping Nearby, See Remarks
Roof	Asphalt Shingles
Construction	Wood, Vinyl

Foundation Concrete Perimeter

Additional Information

Date Listed April 3rd, 2025

Days on Market 2

Zoning Zone 16

DATA IS DEEMED RELIABLE BUT IS NOT GUARANTEED ACCURATE BY THE REALTORS® ASSOCIATION OF EDMONTON. COPYRIGHT 2025 BY THE REALTORS® ASSOCIATION OF EDMONTON. ALL RIGHTS RESERVED. Trademarks are owned or controlled by the Canadian Real Estate Association (CREA) and identify real estate professionals who are members of CREA (REALTOR®, REALTORS®) and/or the quality of services they provide (MLS®, Multiple Listing Service®)

Listing information last updated on April 5th, 2025 at 1:47am MDT