

Courtesy Of Kendra N Chisholm Of CIR Realty

## \$295,000 - 505 10728 82 Avenue, Edmonton

MLS® #E4428888

**\$295,000**

2 Bedroom, 1.50 Bathroom, 989 sqft  
Condo / Townhouse on 0.00 Acres

Garneau, Edmonton, AB

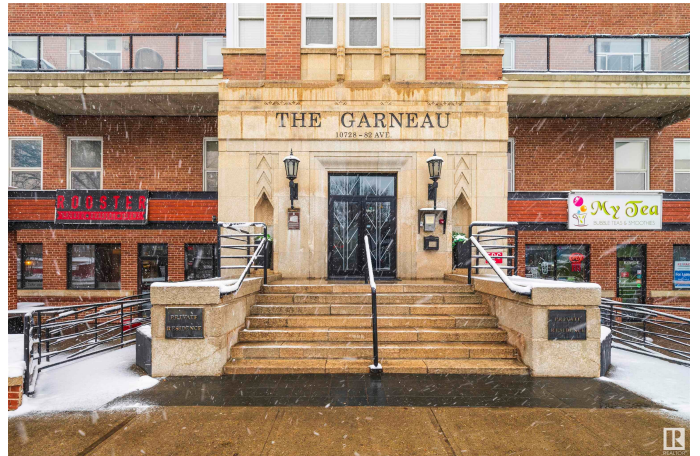
Experience elevated living in this penthouse, perfectly positioned in one of Edmonton's most vibrant neighborhoods. Steps from boutique shops, trendy cafés, top-rated restaurants, lively markets & the University of Alberta, this location offers both convenience & character. Become captivated by the striking exposed brick, soaring ceilings & expansive windows that flood the space with natural light. A private north-facing balcony provides incredible city views. The kitchen is a dream, featuring sleek white cabinetry, stainless steel & black appliances, pristine countertops, a custom tile backsplash & an elevated breakfast bar—perfect for casual dining. The blend of industrial charm & modern design continues with a statement-making circular staircase. Cozy up in the living room, where a gas fireplace creates the perfect ambiance for snowy nights at home. Upstairs, you'll find two spacious bedrooms, a stylish 3-piece bath, in-suite laundry + a private second entry. This is a rare find, it must be seen!

Built in 1948

### Essential Information

MLS® # E4428888

Price \$295,000



|                |                       |
|----------------|-----------------------|
| Bedrooms       | 2                     |
| Bathrooms      | 1.50                  |
| Full Baths     | 1                     |
| Half Baths     | 1                     |
| Square Footage | 989                   |
| Acres          | 0.00                  |
| Year Built     | 1948                  |
| Type           | Condo / Townhouse     |
| Sub-Type       | Lowrise Apartment     |
| Style          | Multi Level Apartment |
| Status         | Active                |

### **Community Information**

|             |                     |
|-------------|---------------------|
| Address     | 505 10728 82 Avenue |
| Area        | Edmonton            |
| Subdivision | Garneau             |
| City        | Edmonton            |
| County      | ALBERTA             |
| Province    | AB                  |
| Postal Code | T6E 6P5             |

### **Amenities**

|                |                                                                                          |
|----------------|------------------------------------------------------------------------------------------|
| Amenities      | On Street Parking, Ceiling 9 ft., Deck, Secured Parking, Security Door, Storage-In-Suite |
| Parking Spaces | 1                                                                                        |
| Parking        | Stall, Underground                                                                       |

### **Interior**

|              |                                                                                                                                             |
|--------------|---------------------------------------------------------------------------------------------------------------------------------------------|
| Appliances   | Air Conditioning-Central, Dishwasher-Built-In, Microwave Hood Fan, Oven-Built-In, Refrigerator, Stove-Countertop Electric, Window Coverings |
| Heating      | Forced Air-1, Natural Gas                                                                                                                   |
| Fireplace    | Yes                                                                                                                                         |
| Fireplaces   | Heatilator/Fan, Mantel                                                                                                                      |
| # of Stories | 5                                                                                                                                           |
| Stories      | 2                                                                                                                                           |
| Has Basement | Yes                                                                                                                                         |
| Basement     | None, No Basement                                                                                                                           |

### **Exterior**

|                   |                                                                                                                                                                  |
|-------------------|------------------------------------------------------------------------------------------------------------------------------------------------------------------|
| Exterior          | Brick, Stucco                                                                                                                                                    |
| Exterior Features | Back Lane, Flat Site, Golf Nearby, Park/Reserve, Paved Lane, Playground Nearby, Public Swimming Pool, Public Transportation, Schools, Shopping Nearby, View City |
| Roof              | Tar & Gravel                                                                                                                                                     |
| Construction      | Brick, Stucco                                                                                                                                                    |
| Foundation        | Concrete Perimeter                                                                                                                                               |

### **School Information**

|            |                           |
|------------|---------------------------|
| Elementary | Garneau/Lady of Mt Carmel |
| Middle     | Allendale/McKernan        |
| High       | Strathcona                |

### **Additional Information**

|                |                 |
|----------------|-----------------|
| Date Listed    | April 3rd, 2025 |
| Days on Market | 1               |
| Zoning         | Zone 15         |
| Condo Fee      | \$523           |

DATA IS DEEMED RELIABLE BUT IS NOT GUARANTEED ACCURATE BY THE REALTORS® ASSOCIATION OF EDMONTON. COPYRIGHT 2025 BY THE REALTORS® ASSOCIATION OF EDMONTON. ALL RIGHTS RESERVED. Trademarks are owned or controlled by the Canadian Real Estate Association (CREA) and identify real estate professionals who are members of CREA (REALTOR®, REALTORS®) and/or the quality of services they provide (MLS®, Multiple Listing Service®)

Listing information last updated on April 4th, 2025 at 9:02pm MDT