

## \$485,000 - 30 Davy Crescent, Sherwood Park

MLS® #E4428813

**\$485,000**

4 Bedroom, 3.00 Bathroom, 1,077 sqft  
Single Family on 0.00 Acres

Davidson Creek, Sherwood Park, AB

This 4-level split is quite a find, With space and charm so well-designed. Four bedrooms give you room to grow, A yard so big, let gardens flow! The parkingâ€™s plenty, bring your ride, Cars, RVsâ€™just step inside. Bright and airy, filled with light, A place that feels just right at night. Cozy corners, open space, A welcoming and warm embrace. Come take a look, donâ€™t miss your chance, A home like this deserves a glance!

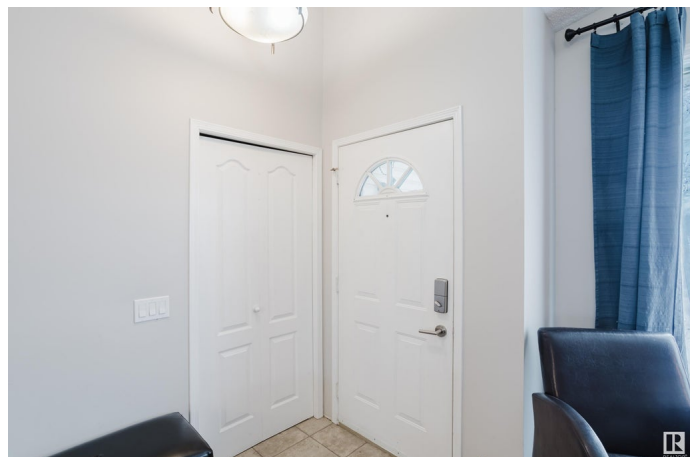
Built in 1991

### Essential Information

|                |                        |
|----------------|------------------------|
| MLS® #         | E4428813               |
| Price          | \$485,000              |
| Bedrooms       | 4                      |
| Bathrooms      | 3.00                   |
| Full Baths     | 3                      |
| Square Footage | 1,077                  |
| Acres          | 0.00                   |
| Year Built     | 1991                   |
| Type           | Single Family          |
| Sub-Type       | Detached Single Family |
| Style          | 4 Level Split          |
| Status         | Active                 |

### Community Information

Address 30 Davy Crescent



|             |                |
|-------------|----------------|
| Area        | Sherwood Park  |
| Subdivision | Davidson Creek |
| City        | Sherwood Park  |
| County      | ALBERTA        |
| Province    | AB             |
| Postal Code | T8H 1P3        |

### **Amenities**

|                |  |
|----------------|--|
| Amenities      | Deck, Fire Pit, Gazebo, Hot Water Natural Gas, No Smoking Home, R.V. Storage, Vaulted Ceiling, Vinyl Windows |
| Parking Spaces | 5  |
| Parking        | 220 Volt Wiring, Double Garage Attached, Insulated, RV Parking   |

### **Interior**

|                   |   |
|-------------------|---|
| Interior Features | ensuite bathroom  |
| Appliances        | Dishwasher-Built-In, Dryer, Garage Opener, Garburator, Hood Fan, Refrigerator, Stove-Electric, Washer |
| Heating           | Forced Air-1, Natural Gas   |
| Fireplace         | Yes   |
| Fireplaces        | Mantel, Tile Surround   |
| Stories           | 4   |
| Has Basement      | Yes   |
| Basement          | Full, Finished  |

### **Exterior**

|                   |  |
|-------------------|--|
| Exterior          | Wood, Vinyl  |
| Exterior Features | Fenced, Low Maintenance Landscape, No Back Lane, No Through Road, Schools, Shopping Nearby |
| Roof              | Asphalt Shingles   |
| Construction      | Wood, Vinyl  |
| Foundation        | Concrete Perimeter   |

### **Additional Information**

|                |                 |
|----------------|-----------------|
| Date Listed    | April 3rd, 2025 |
| Days on Market | 8               |
| Zoning         | Zone 25         |

DATA IS DEEMED RELIABLE BUT IS NOT GUARANTEED ACCURATE BY THE REALTORS® ASSOCIATION OF EDMONTON. COPYRIGHT 2025 BY THE REALTORS® ASSOCIATION OF EDMONTON. ALL RIGHTS RESERVED. Trademarks are owned or controlled by the Canadian Real Estate Association (CREA) and identify real estate professionals who are members of CREA (REALTOR®, REALTORS®) and/or the quality of services they

provide (MLS® , Multiple Listing Service®)

Listing information last updated on April 11th, 2025 at 8:47pm MDT