

\$294,900 - 5105 46 Avenue, Wetaskiwin

MLS® #E4427622

\$294,900

5 Bedroom, 2.00 Bathroom, 1,351 sqft
Single Family on 0.00 Acres

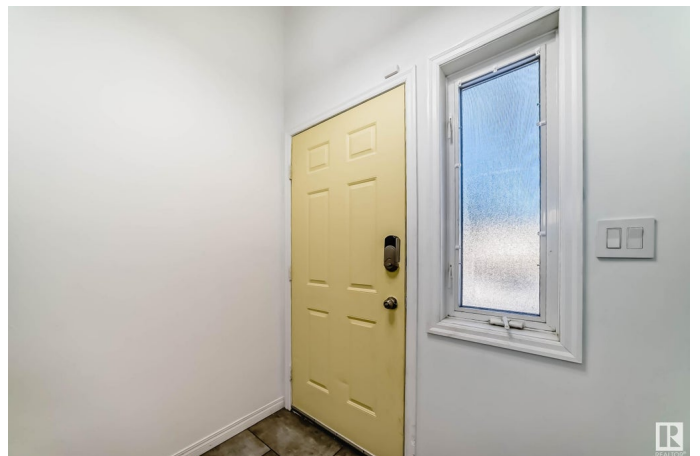
East Central, Wetaskiwin, AB

Family Sized bi-level offers 5 Bedrooms, 2 full Bathrooms, main floor laundry/mudroom. Stunning updated kitchen with dark cabinetry and stainless steel appliances. Separate dining area with open concept living room and maple hardwood flooring. Main bathroom also has ensuite entrance. Newer vinyl windows throughout most of the home. Basement level has the additional 2 bedrooms, Second kitchen with custom island. Beautifully tiled 3pc bath with walk-in shower. Lots of space to entertain with spacious family room. 2nd entrance if you choose to make this home with mother-in-law suite. South facing deck off the main floor with partially covered patio. Bonus A/C. Enclosed raised bed gardening area. Fully fenced. Single detached garage. Playset in yard will stay. Lots of space to enjoy with your family and pets. Located in mature and quiet area of the City. Close walking distance to schools, parks and shopping. Only 30 minutes to International Airport.

Built in 1986

Essential Information

MLS® #	E4427622
Price	\$294,900
Bedrooms	5
Bathrooms	2.00



Full Baths	2
Square Footage	1,351
Acres	0.00
Year Built	1986
Type	Single Family
Sub-Type	Detached Single Family
Style	Bi-Level
Status	Active

Community Information

Address	5105 46 Avenue
Area	Wetaskiwin
Subdivision	East Central
City	Wetaskiwin
County	ALBERTA
Province	AB
Postal Code	T9A 0H5

Amenities

Amenities	Air Conditioner, Deck, No Smoking Home
Parking Spaces	4
Parking	Front/Rear Drive Access, RV Parking, Single Garage Detached

Interior

Interior Features	ensuite bathroom
Appliances	Air Conditioning-Central, Dishwasher-Built-In, Dryer, Fan-Ceiling, Garage Control, Garage Opener, Hood Fan, Stove-Electric, Washer, Window Coverings, See Remarks, Refrigerators-Two
Heating	Forced Air-1, Natural Gas
Stories	2
Has Basement	Yes
Basement	Full, Finished

Exterior

Exterior	Wood, Vinyl
Exterior Features	Back Lane, Fenced, Flat Site, Fruit Trees/Shrubs, Golf Nearby, Landscaped, Playground Nearby, Public Swimming Pool, Schools, Shopping Nearby
Roof	Asphalt Shingles

Construction	Wood, Vinyl
Foundation	Preserved Wood

School Information

Elementary	Queen Elizabeth
Middle	Queen Elizabeth
High	Wetaskiwin Composite

Additional Information

Date Listed	March 26th, 2025
Days on Market	8
Zoning	Zone 80

DATA IS DEEMED RELIABLE BUT IS NOT GUARANTEED ACCURATE BY THE REALTORS® ASSOCIATION OF EDMONTON. COPYRIGHT 2025 BY THE REALTORS® ASSOCIATION OF EDMONTON. ALL RIGHTS RESERVED. Trademarks are owned or controlled by the Canadian Real Estate Association (CREA) and identify real estate professionals who are members of CREA (REALTOR®, REALTORS®) and/or the quality of services they provide (MLS®, Multiple Listing Service®)

Listing information last updated on April 3rd, 2025 at 7:32pm MDT