

## \$780,000 - 30 Eastbrick Place, St. Albert

MLS® #E4426856

### \$780,000

6 Bedroom, 3.50 Bathroom, 2,767 sqft  
Single Family on 0.00 Acres

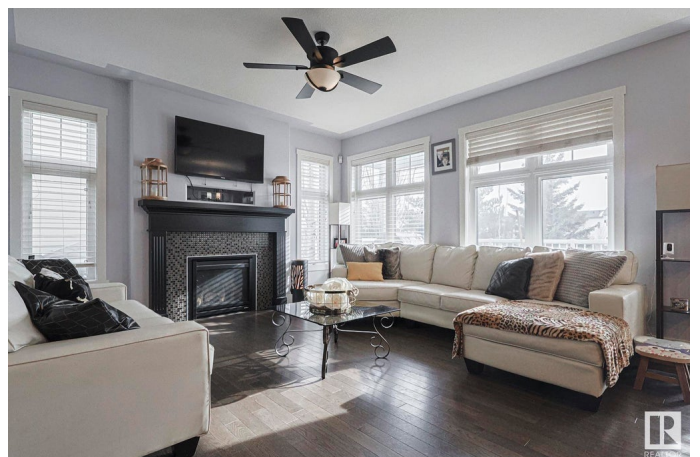
Erin Ridge, St. Albert, AB

Welcome to the Brickyard at Erin Ridge! This home is perfect for a large growing family. Walking through the front door you will see an office to your left. To the right you have a 2 pc bath, access to the garage and your pass through pantry. The open concept kitchen living area boasts tons of counter space & a large island which is perfect for entertaining. Upstairs you will find a total of 5 bedrooms. The primary bedroom has an ensuite with walk in shower, dual sinks, & a walk in closet. The other 4 bedrooms are very spacious. Finishing off the 2nd level is a 4 pc bath. Up on the 3rd level you will find a loft which is perfect for family movie nights! The basement is full finished with a 6th bedroom, 4 pc bath, rec room and storage. The heated garage is a tandem triple and offers overhead door access to the back yard. Other features include A/C, a covered deck off the dining area, a small patio off the 3rd level loft, & brand new carpeting on 3 levels.

Built in 2011

### Essential Information

MLS® #	E4426856
Price	\$780,000
Bedrooms	6
Bathrooms	3.50



Full Baths	3
Half Baths	1
Square Footage	2,767
Acres	0.00
Year Built	2011
Type	Single Family
Sub-Type	Detached Single Family
Style	2 Storey
Status	Active

### **Community Information**

Address	30 Eastbrick Place
Area	St. Albert
Subdivision	Erin Ridge
City	St. Albert
County	ALBERTA
Province	AB
Postal Code	T8N 4C7

### **Amenities**

Amenities	Air Conditioner, No Smoking Home
Parking	Tandem, Triple Garage Attached

### **Interior**

Interior Features	ensuite bathroom
Appliances	Air Conditioning-Central, Dishwasher-Built-In, Dryer, Garage Control, Garage Opener, Microwave Hood Fan, Refrigerator, Stove-Electric, Washer, Window Coverings
Heating	Forced Air-1, Natural Gas
Fireplace	Yes
Fireplaces	Direct Vent
Stories	4
Has Basement	Yes
Basement	Full, Finished

### **Exterior**

Exterior	Wood, Brick, Fiber Cement
Exterior Features	Fenced, Golf Nearby, Landscaped
Roof	Asphalt Shingles

Construction Wood, Brick, Fiber Cement  
Foundation Concrete Perimeter

### **Additional Information**

Date Listed March 21st, 2025  
Days on Market 14  
Zoning Zone 24

DATA IS DEEMED RELIABLE BUT IS NOT GUARANTEED ACCURATE BY THE REALTORS® ASSOCIATION OF EDMONTON. COPYRIGHT 2025 BY THE REALTORS® ASSOCIATION OF EDMONTON. ALL RIGHTS RESERVED. Trademarks are owned or controlled by the Canadian Real Estate Association (CREA) and identify real estate professionals who are members of CREA (REALTOR®, REALTORS®) and/or the quality of services they provide (MLS®, Multiple Listing Service®)

Listing information last updated on April 4th, 2025 at 4:17pm MDT