

# \$564,900 - 231 Village Circle, Sherwood Park

MLS® #E4426755

## \$564,900

5 Bedroom, 3.00 Bathroom, 1,905 sqft  
Single Family on 0.00 Acres

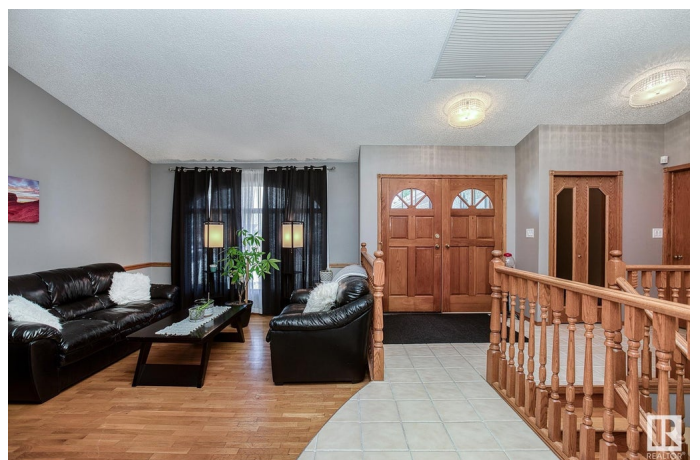
Village on the Lake, Sherwood Park, AB

ONE OF A KIND! Don't miss out on this amazing opportunity whether you are a family; investor or 1st-time home buyer. 1,905 SqFt Bungalow with a SEPARATE ENTRANCE from outside into this Fully Finished Basement with a SECOND Laundry in home (having potential for a Legal or IN-LAW Suite). 5 Bedrooms/3 Full Bathrooms & Heated, Oversized Double Attached Garage. The Main floor has spacious Living & Family Rooms situated on either side of a functional Kitchen boasting plenty of cabinets & countertop space. The 2 Bedrms Up incl a Primary Bedrm has a W/I Closet & Full Ensuite. A Spa-like Room takes you out to the deck & backyard. The Mudroom/Laundry & 4-Pc Bathroom complete this floor. The Basement has 3 Bedrms; a huge Family Rm & large, Full Kitchen offering a Dining Area. The 4-Pc Bathrm has just been remodeled. In-Floor Heat throughout the home. Conveniently located just steps to shopping, public transportation/station; restaurants; parks & close to schools. There is so much to offer with this home

Built in 1987

## Essential Information

MLS® #	E4426755
Price	\$564,900



Bedrooms	5
Bathrooms	3.00
Full Baths	3
Square Footage	1,905
Acres	0.00
Year Built	1987
Type	Single Family
Sub-Type	Detached Single Family
Style	Bungalow
Status	Active

### **Community Information**

Address	231 Village Circle
Area	Sherwood Park
Subdivision	Village on the Lake
City	Sherwood Park
County	ALBERTA
Province	AB
Postal Code	T8A 5A1

### **Amenities**

Amenities	Deck, Parking-Extra, See Remarks
Parking	Double Garage Attached

### **Interior**

Interior Features	ensuite bathroom
Appliances	Dishwasher-Built-In, Garage Control, Garage Opener, Hood Fan, Microwave Hood Fan, Oven-Built-In, Stove-Countertop Electric, Stove-Electric, Water Softener, Window Coverings, Dryer-Two, Washers-Two, TV Wall Mount, Garage Heater
Heating	Hot Water, Natural Gas
Fireplace	Yes
Fireplaces	Brick Facing
Stories	2
Has Basement	Yes
Basement	Full, Finished

### **Exterior**

Exterior	Wood, Brick, Stucco
----------	---------------------

Exterior Features	Cul-De-Sac, Fenced, Fruit Trees/Shrubs, Landscaped, Park/Reserve, Public Transportation, Schools, Shopping Nearby, See Remarks
Roof	Asphalt Shingles
Construction	Wood, Brick, Stucco
Foundation	Concrete Perimeter

### **Additional Information**

Date Listed	March 21st, 2025
Days on Market	14
Zoning	Zone 25

DATA IS DEEMED RELIABLE BUT IS NOT GUARANTEED ACCURATE BY THE REALTORS® ASSOCIATION OF EDMONTON. COPYRIGHT 2025 BY THE REALTORS® ASSOCIATION OF EDMONTON. ALL RIGHTS RESERVED. Trademarks are owned or controlled by the Canadian Real Estate Association (CREA) and identify real estate professionals who are members of CREA (REALTOR®, REALTORS®) and/or the quality of services they provide (MLS®, Multiple Listing Service®)

Listing information last updated on April 4th, 2025 at 1:32am MDT