

## \$495,000 - 23 Landon Drive, Spruce Grove

MLS® #E4426574

**\$495,000**

4 Bedroom, 3.00 Bathroom, 1,386 sqft  
Single Family on 0.00 Acres

Lakewood\_SPGR, Spruce Grove, AB

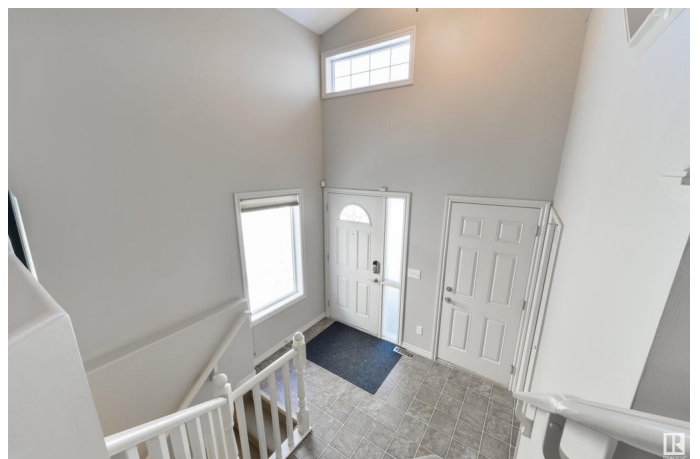
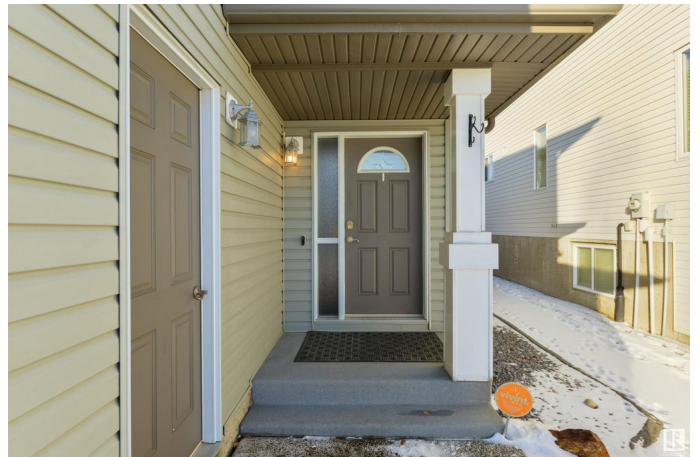
Hello gorgeous! Fully-finished with a wide open floor plan, this is the home you've been waiting for! Features here include central A/C, vaulted ceilings, a lovely kitchen with GRANITE countertops, center island, corner pantry, and separate dinette, a large living room with gas fireplace, 4 total bedrooms including an upper-level owner's suite with a MASSIVE walk-in closet & 4pc ensuite, and a finished basement.

Outside you'll find a HUGE 2-tiered exterior deck – perfect for entertaining your family & friends, and a landscaped & fenced yard with a desirable WEST-FACING exposure. Within walking distance to playgrounds, trails, & the Century Crossing shopping district, you'll love the easy access to commuter highways from here.

Built in 2006

### Essential Information

MLS® #	E4426574
Price	\$495,000
Bedrooms	4
Bathrooms	3.00
Full Baths	3
Square Footage	1,386
Acres	0.00
Year Built	2006



Type	Single Family
Sub-Type	Detached Single Family
Style	Bi-Level
Status	Active

### **Community Information**

Address	23 Landon Drive
Area	Spruce Grove
Subdivision	Lakewood_SPGR
City	Spruce Grove
County	ALBERTA
Province	AB
Postal Code	T7X 4S1

### **Amenities**

Amenities	Air Conditioner, Deck, No Smoking Home, Vaulted Ceiling, See Remarks
Parking	Double Garage Attached

### **Interior**

Interior Features	ensuite bathroom
Appliances	Dishwasher-Built-In, Dryer, Garage Control, Garage Opener, Microwave Hood Fan, Refrigerator, Storage Shed, Stove-Electric, Washer, Window Coverings
Heating	Forced Air-1, Natural Gas
Fireplace	Yes
Fireplaces	See Remarks
Stories	3
Has Basement	Yes
Basement	Full, Finished

### **Exterior**

Exterior	Wood, Vinyl
Exterior Features	Fenced, Flat Site, Landscaped, Playground Nearby, Public Transportation, Schools, Shopping Nearby, See Remarks
Roof	Asphalt Shingles
Construction	Wood, Vinyl
Foundation	Concrete Perimeter

### **Additional Information**

Date Listed March 20th, 2025

Days on Market 15

Zoning Zone 91

DATA IS DEEMED RELIABLE BUT IS NOT GUARANTEED ACCURATE BY THE REALTORS® ASSOCIATION OF EDMONTON. COPYRIGHT 2025 BY THE REALTORS® ASSOCIATION OF EDMONTON. ALL RIGHTS RESERVED. Trademarks are owned or controlled by the Canadian Real Estate Association (CREA) and identify real estate professionals who are members of CREA (REALTOR®, REALTORS®) and/or the quality of services they provide (MLS®, Multiple Listing Service®)

Listing information last updated on April 4th, 2025 at 11:32am MDT