

Courtesy Of Tim Puhlmann Of Exp Realty

## \$272,900 - 205 4008 Savaryn Drive, Edmonton

MLS® #E4422934

**\$272,900**

2 Bedroom, 2.00 Bathroom, 848 sqft  
Condo / Townhouse on 0.00 Acres

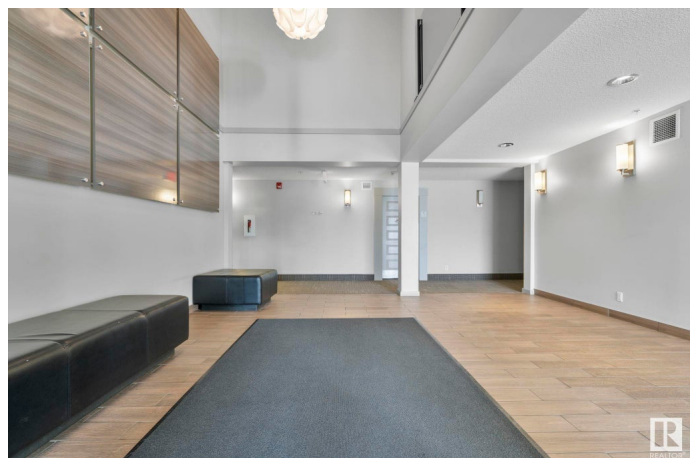
Summerside, Edmonton, AB

WELCOME to ARA at LAKE SUMMERSIDE!  
This beautiful and spacious well maintained 2 bedroom 2 bathroom condo comes with several feature such as open-concept layout with an ABUNDANCE of NATURAL LIGHT that connects the living area to the MODERN KITCHEN with stainless steel appliances, QUARTZ countertops, PANTRY & ISLAND complete with breakfast bar. It also features Vinyl plank flooring and large balcony. Bedrooms on both sides of the living room with walk-through closet into the 3 piece en-suite bathroom. Enjoy living here while gaining SUMMERSIDE lake access with an included membership in the Summerside beach club where you can canoe, paddle board, join the community classes and programs, and relax on the beach. Heat and water included in condo fees! The building also offers a gym, common room, and secured entrance for safety, storage and Titled parking stall. Get ready to move in!

Built in 2016

### Essential Information

MLS® #	E4422934
Price	\$272,900
Bedrooms	2
Bathrooms	2.00



Full Baths	2
Square Footage	848
Acres	0.00
Year Built	2016
Type	Condo / Townhouse
Sub-Type	Lowrise Apartment
Style	Multi Level Apartment
Status	Active

### **Community Information**

Address	205 4008 Savaryn Drive
Area	Edmonton
Subdivision	Summerside
City	Edmonton
County	ALBERTA
Province	AB
Postal Code	T6X 2E5

### **Amenities**

Amenities	Exercise Room, Secured Parking, Security Door, Social Rooms, Storage Cage
Parking	Heated, Underground

### **Interior**

Interior Features	ensuite bathroom
Appliances	Dishwasher - Energy Star, Dryer, Microwave Hood Fan, Refrigerator, Stove-Electric, Washer, Dishwasher-Two
Heating	Forced Air-2, Natural Gas
# of Stories	4
Stories	4
Has Basement	Yes
Basement	None, No Basement

### **Exterior**

Exterior	Wood, Vinyl
Exterior Features	Airport Nearby, Beach Access, Schools, View Lake
Roof	Asphalt Shingles
Construction	Wood, Vinyl
Foundation	Concrete Perimeter, Slab

## Additional Information

Date Listed	February 25th, 2025
Days on Market	39
Zoning	Zone 53
HOA Fees	443.71
HOA Fees Freq.	Annually
Condo Fee	\$420

DATA IS DEEMED RELIABLE BUT IS NOT GUARANTEED ACCURATE BY THE REALTORS® ASSOCIATION OF EDMONTON. COPYRIGHT 2025 BY THE REALTORS® ASSOCIATION OF EDMONTON. ALL RIGHTS RESERVED. Trademarks are owned or controlled by the Canadian Real Estate Association (CREA) and identify real estate professionals who are members of CREA (REALTOR®, REALTORS®) and/or the quality of services they provide (MLS®, Multiple Listing Service®)

Listing information last updated on April 5th, 2025 at 7:02pm MDT