

\$239,000 - 11303 86 Street, Edmonton

MLS® #E4422032

\$239,000

4 Bedroom, 2.00 Bathroom, 901 sqft
Single Family on 0.00 Acres

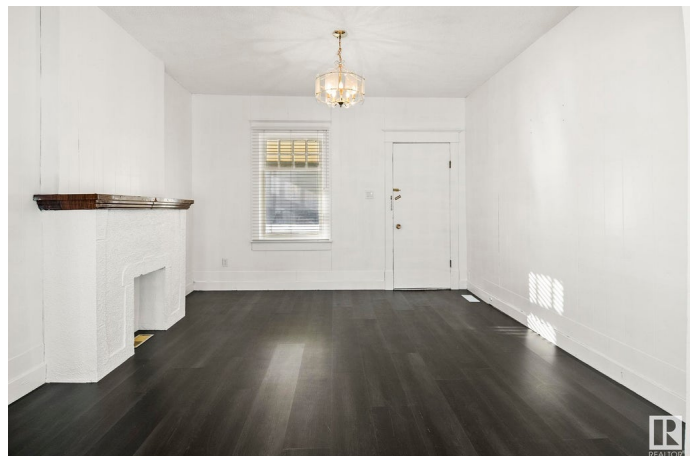
Parkdale (Edmonton), Edmonton, AB

INVESTOR ALERT!! This CORNER LOT is perfect for any investor! Zoned for RA7, this lot has many different investment opportunities! The home itself has newer vinyl flooring, roof, bathroom and sewer pipe/plumbing stack. Upstairs you will find a spacious living room and dining room, kitchen, 3 beds and 1 full 3 pc bath which has been recently updated. In the basement you will find the laundry room, 3 pc bath, 1 bed room and a flex room. The house is situated on a large lot (368.924 m2) with tons of street parking, large backyard, covered deck and storage shed. Don't miss out on this opportunity to call this place home or your next investment opportunity!

Built in 1915

Essential Information

| | |
|----------------|------------------------|
| MLS® # | E4422032 |
| Price | \$239,000 |
| Bedrooms | 4 |
| Bathrooms | 2.00 |
| Full Baths | 2 |
| Square Footage | 901 |
| Acres | 0.00 |
| Year Built | 1915 |
| Type | Single Family |
| Sub-Type | Detached Single Family |



Style Bungalow
Status Active

Community Information

Address 11303 86 Street
Area Edmonton
Subdivision Parkdale (Edmonton)
City Edmonton
County ALBERTA
Province AB
Postal Code T5B 3H9

Amenities

Amenities On Street Parking, Deck, No Animal Home, See Remarks
Parking 2 Outdoor Stalls

Interior

Appliances Dryer, Fan-Ceiling, Hood Fan, Refrigerator, Stove-Electric, Washer, Window Coverings
Heating Forced Air-1, Natural Gas
Stories 2
Has Basement Yes
Basement Full, Finished

Exterior

Exterior Wood
Exterior Features Corner Lot, Fenced, Landscaped, Playground Nearby, Public Transportation, Recreation Use, Schools, Shopping Nearby, See Remarks
Roof Asphalt Shingles
Construction Wood
Foundation Concrete Perimeter

Additional Information

Date Listed February 17th, 2025
Days on Market 49
Zoning Zone 05

DATA IS DEEMED RELIABLE BUT IS NOT GUARANTEED ACCURATE BY THE REALTORS® ASSOCIATION OF EDMONTON. COPYRIGHT 2025 BY THE REALTORS® ASSOCIATION OF EDMONTON. ALL RIGHTS RESERVED. Trademarks are owned or controlled by the Canadian Real Estate Association (CREA) and identify real

estate professionals who are members of CREA (REALTOR®®, REALTORS®®) and/or the quality of services they provide (MLS®®, Multiple Listing Service®®)

Listing information last updated on April 7th, 2025 at 3:47am MDT