

Courtesy Of Daryl J Appleton Of Real Broker

\$875,000 - 2003 Ainslie Link Link, Edmonton

MLS® #E4419665

\$875,000

4 Bedroom, 3.50 Bathroom, 2,819 sqft
Single Family on 0.00 Acres

Ambleside, Edmonton, AB

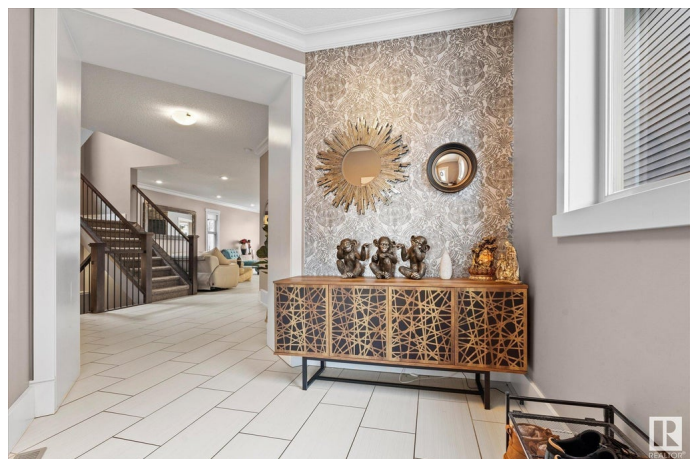
Indulge in luxury living in Ambleside! This stunning 2800+ sq. ft. home offers 4 bedrooms, a den, 3.5 baths, and a fully finished basement, all while backing onto a peaceful walking path. The open main level features 9' ceilings, ceramic tile flooring throughout, an elegant brick-facing fireplace that warms the expansive living area, while the chef-inspired kitchen dazzles with quartz countertops, stainless steel appliances, and a gas range. Finishing this level is a 2 pace bath + mud room. Upstairs, the lavish primary retreat has its own fireplace, and includes a spa-like 5-piece ensuite and a walk-in closet. Completing this level is two more bedrooms, a large bonus room, and upper-floor laundry. The fully finished basement includes a rec room w/ bar, bedroom, den, and full bath with in-floor heating. Outdoors, enjoy low-maintenance luxury with artificial turf, a large composite deck, and a hot tub. Ideally located within walking distance of schools, shopping, and entertainment. Your dream home awaits!

Built in 2013

Essential Information

MLS® # E4419665

Price \$875,000



| | |
|----------------|------------------------|
| Bedrooms | 4 |
| Bathrooms | 3.50 |
| Full Baths | 3 |
| Half Baths | 1 |
| Square Footage | 2,819 |
| Acres | 0.00 |
| Year Built | 2013 |
| Type | Single Family |
| Sub-Type | Detached Single Family |
| Style | 2 Storey |
| Status | Active |

Community Information

| | |
|-------------|------------------------|
| Address | 2003 Ainslie Link Link |
| Area | Edmonton |
| Subdivision | Ambleside |
| City | Edmonton |
| County | ALBERTA |
| Province | AB |
| Postal Code | T6W 2M1 |

Amenities

| | |
|-----------|--|
| Amenities | Air Conditioner, Ceiling 9 ft., Deck, No Animal Home, No Smoking Home, Vinyl Windows, HRV System, Natural Gas BBQ Hookup |
| Parking | Double Garage Attached |

Interior

| | |
|-------------------|--|
| Interior Features | ensuite bathroom |
| Appliances | Air Conditioning-Central, Dishwasher-Built-In, Dryer, Garage Control, Garage Opener, Hood Fan, Oven-Microwave, Refrigerator, Stove-Gas, Washer, Window Coverings, Wine/Beverage Cooler |
| Heating | Forced Air-1, Natural Gas |
| Fireplace | Yes |
| Fireplaces | Double Sided, Stone Facing |
| Stories | 3 |
| Has Basement | Yes |
| Basement | None, Finished |

Exterior

| | |
|-------------------|---|
| Exterior | Wood, Stone, Vinyl |
| Exterior Features | Fenced, Flat Site, Golf Nearby, Low Maintenance Landscape, No Back Lane, Playground Nearby, Public Transportation, Schools, Shopping Nearby |
| Roof | Asphalt Shingles |
| Construction | Wood, Stone, Vinyl |
| Foundation | Concrete Perimeter |

Additional Information

Date Listed January 30th, 2025

Days on Market 65

Zoning Zone 56

DATA IS DEEMED RELIABLE BUT IS NOT GUARANTEED ACCURATE BY THE REALTORS® ASSOCIATION OF EDMONTON. COPYRIGHT 2025 BY THE REALTORS® ASSOCIATION OF EDMONTON. ALL RIGHTS RESERVED. Trademarks are owned or controlled by the Canadian Real Estate Association (CREA) and identify real estate professionals who are members of CREA (REALTOR®, REALTORS®) and/or the quality of services they provide (MLS®, Multiple Listing Service®)

Listing information last updated on April 5th, 2025 at 9:17am MDT