

# \$584,900 - 9 Red Crest Way, St. Albert

MLS® #E4419300

## \$584,900

3 Bedroom, 2.50 Bathroom, 1,645 sqft  
Single Family on 0.00 Acres

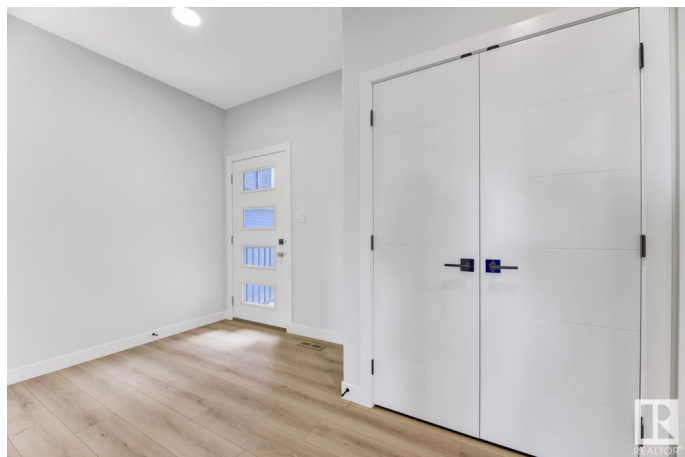
Riverside (St. Albert), St. Albert, AB

Located in the Riverside Community in St. Albert, is this beautiful 1,652, 3 bedroom two-story home that is backing onto a pond. Check out this perfect location for your growing family, close to walking paths, schools, public transit and recreation. This home boasts 9' ceiling on main, quartz countertops, electric fireplace with custom surround and upgraded appliance package. Added feature is a ready planned side entrance, 9' basement, rough-in plumbing and HVAC. The development possibilities are waiting for your imagination. Besides the fabulous location, open floor plan, and stunning finishings, the value will impress the price conscious buyer. If you are looking for a perfect family home, this one should be on your list.

Built in 2024

### Essential Information

MLS® #	E4419300
Price	\$584,900
Bedrooms	3
Bathrooms	2.50
Full Baths	2
Half Baths	1
Square Footage	1,645
Acres	0.00



Year Built	2024
Type	Single Family
Sub-Type	Detached Single Family
Style	2 Storey
Status	Active

### **Community Information**

Address	9 Red Crest Way
Area	St. Albert
Subdivision	Riverside (St. Albert)
City	St. Albert
County	ALBERTA
Province	AB
Postal Code	T8N 7Y7

### **Amenities**

Amenities	Ceiling 9 ft., Closet Organizers, Deck, Detectors Smoke, Exterior Walls-2"x6", Front Porch, Smart/Program. Thermostat, Vinyl Windows, Green Building
Parking Spaces	4
Parking	Double Garage Attached, Front Drive Access, Insulated
Is Waterfront	Yes

### **Interior**

Interior Features	ensuite bathroom
Appliances	Dishwasher-Built-In, Dryer, Freezer, Hood Fan, Oven-Microwave, Refrigerator, Stove-Electric, Washer
Heating	Forced Air-1, Natural Gas
Fireplace	Yes
Fireplaces	Tile Surround
Stories	2
Has Basement	Yes
Basement	Full, Unfinished

### **Exterior**

Exterior	Wood, Stone, Vinyl
Exterior Features	Backs Onto Lake, Backs Onto Park/Trees, Corner Lot, Fenced, Not Landscaped, Shopping Nearby
Lot Description	38 x 11.19

Roof	Asphalt Shingles
Construction	Wood, Stone, Vinyl
Foundation	Concrete Perimeter

### **Additional Information**

Date Listed January 26th, 2025

Days on Market 69

Zoning Zone 24

DATA IS DEEMED RELIABLE BUT IS NOT GUARANTEED ACCURATE BY THE REALTORS® ASSOCIATION OF EDMONTON. COPYRIGHT 2025 BY THE REALTORS® ASSOCIATION OF EDMONTON. ALL RIGHTS RESERVED. Trademarks are owned or controlled by the Canadian Real Estate Association (CREA) and identify real estate professionals who are members of CREA (REALTOR®, REALTORS®) and/or the quality of services they provide (MLS®, Multiple Listing Service®)

Listing information last updated on April 5th, 2025 at 3:17am MDT