

Courtesy Of John Rota Of Sweetly

# \$875,000 - 7014 Kiviaq Crescent, Edmonton

MLS® #E4416010

**\$875,000**

3 Bedroom, 4.00 Bathroom, 2,930 sqft

Single Family on 0.00 Acres

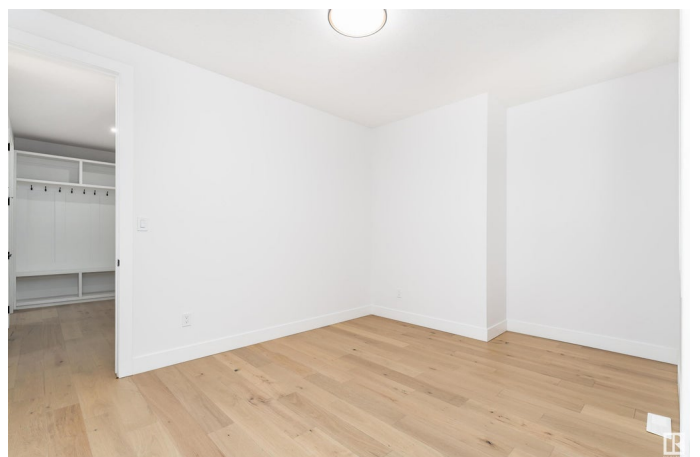
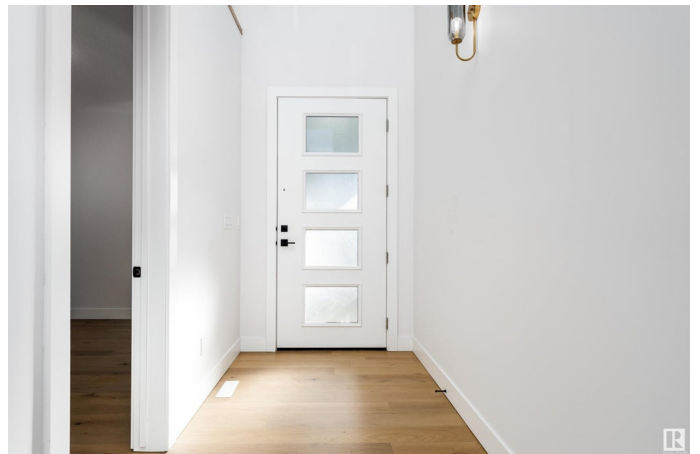
Keswick Area, Edmonton, AB

A stunning 2-storey home offering 2818 sqft of elegant living space. The main floor features a spacious living room with an electric fireplace, a cozy den, a formal dining room, a modern kitchen, a spice kitchen, and a 3-piece bathroom. Upstairs, the primary bedroom boasts a walk-in closet and a luxurious 5-piece ensuite. The second bedroom also includes a walk-in closet and a private 3-piece ensuite. Additionally, there's a third bedroom, a versatile bonus room, and a 4-piece bathroom on this level. The property is complete with a convenient garage. Don't miss out on this beautiful home!

Built in 2024

## Essential Information

MLS® #	E4416010
Price	\$875,000
Bedrooms	3
Bathrooms	4.00
Full Baths	4
Square Footage	2,930
Acres	0.00
Year Built	2024
Type	Single Family
Sub-Type	Detached Single Family
Style	2 Storey



Status Active

### Community Information

Address 7014 Kiviaq Crescent  
Area Edmonton  
Subdivision Keswick Area  
City Edmonton  
County ALBERTA  
Province AB  
Postal Code T6W 5N6

### Amenities

Amenities Detectors Smoke, No Animal Home, No Smoking Home  
Parking Double Garage Attached

### Interior

Interior Features ensuite bathroom  
Appliances See Remarks  
Heating Forced Air-1, Natural Gas  
Stories 2  
Has Basement Yes  
Basement Full, Unfinished

### Exterior

Exterior Wood, Vinyl  
Exterior Features Playground Nearby, Public Transportation, Schools, Shopping Nearby  
Roof Asphalt Shingles  
Construction Wood, Vinyl  
Foundation Concrete Perimeter

### School Information

Elementary Ormsby School  
Middle S. Bruce Smith School  
High Jasper Place School

### Additional Information

Date Listed December 13th, 2024  
Days on Market 118  
Zoning Zone 56

DATA IS DEEMED RELIABLE BUT IS NOT GUARANTEED ACCURATE BY THE REALTORS® ASSOCIATION OF EDMONTON. COPYRIGHT 2025 BY THE REALTORS® ASSOCIATION OF EDMONTON. ALL RIGHTS RESERVED. Trademarks are owned or controlled by the Canadian Real Estate Association (CREA) and identify real estate professionals who are members of CREA (REALTOR®, REALTORS®) and/or the quality of services they provide (MLS®, Multiple Listing Service®)

Listing information last updated on April 9th, 2025 at 9:32pm MDT